

OLATHE PUBLIC SCHOOLS

2012-13 Annual Report



Students Prepared for *Their* Future

14160 Black Bob Road • Olathe, Kansas • www.olatheschools.com



A DISTRICT OF **EXCELLENCE**

A Community that Cares

The Olathe School District is a district of excellence. The largest school district in the Kansas City metropolitan area, the Olathe School District is located southwest of Kansas City, in Johnson County, Kansas.

Home to nearly 29,000 students and 4,400 staff members, the district serves students in Olathe and parts of Lenexa, Overland Park and Shawnee.

The caring staff members in each of the district's schools strive to help prepare each individual student for his or her future. Each building has a group of staff members teaming together to allow students to learn in a safe, inviting and innovative environment.

The district has outstanding test scores year after year. It is guided by innovative thinkers and clear and concise standards.

The district is a thriving community of people who give from their hearts. The Olathe Public Schools—which has grown every year since its inception in 1965—is a community that deeply cares for their own.





AT A GLANCE

Enrollment: 28,872 (September 2012)

- Second-largest district in Kansas
- The Olathe School District is expected to continue to grow for the next 30 years



Number of Staff: 4,442

- 2,414—Licensed/Certified staff
- 2,028—Classified support staff
- 15 years—Average experience of classroom teachers

A Growing School District

Schools and Programs:

- 34—Elementary schools (Grades K-5)
- 9—Middle schools (Grades 6-8)
- 4—High schools (Grades 9-12)
- Claire Learning Center
- Harmony and Heartland early childhood learning centers for students with special needs
- Millcreek Technical Education Center
- Prairie Learning Center for students with special needs
- West Dennis Learning Center

Strong Foundation of Learning and Student Inv

Learning Results

- ACT composite average: 23.7
- 10 National Merit finalists in 2013

Accreditation

All schools accredited by the state of Kansas

Graduation Rate

92.9 percent

Attendance Rate

95.1 percent



Programs

- Elementary International Language Program
- Elementary weekly computer technology instruction
- Tiered math instruction at the middle level, including advanced classes
- Advancement Via Individual Determination (AVID) for increasing college readiness — select middle schools and all high schools
- Six international languages offered, including Japanese and Latin
- 21st Century High School Programs in Aerospace & Engineering, Biotechnology, Culinary Arts, e-Communications, and more
- College level classes — Advanced Placement and College Now courses
- eAcademy online education

- Physical fitness offerings at all levels
- Fine arts offerings at all levels — visual arts, general music, choral, orchestra, band and theatre

College Level Courses

- 17 Advanced Placement courses
- 24 College Now courses

Activities and Athletics

- 80 percent of students in grades 5-12 are involved in one or more activity or athletic opportunity
- Olathe's rich activity and athletic programs create a well-rounded student population



olvement



The district is always striving for high achievement in the classroom. The bar is continually raised and students and staff meet the challenge. The district offers a wide variety of course work and activities with hopes that it sparks an interest in its diverse student population.

What we stand for:

Our Mission:

To provide a safe, positive environment where all students acquire knowledge and skills to be productive citizens.

Our Vision:

Students prepared for *their* future.

Our Purpose:

Student learning

Our Beliefs:

- All children can learn
- Together we can achieve more

Our Core Values:

- Continuous improvement
- Life-long learning



Strengths of the Olathe Public Schools

- Outstanding students and staff
- Community support
- Parental involvement
- The Olathe Public Schools Foundation
- Civic group support

STRENGTHS

The Olathe School District is extremely fortunate to have several groups and organizations it knows it can always count on. The community wraps its arms around the district and gives it encouragement and support in many diverse ways.



A Message from the Board of Education

Our community has always been supportive and committed to providing the Board of Education and district leadership with the tools it needs to provide students with an outstanding education.

That support has only continued following a bond election in June 2013 where 77 percent of voters supported a bond package that was designed to help the district handle its growth, safety and security, technology and aging facility needs. This no-tax-increase bond election will allow the district to build and upgrade facilities to best meet the needs of students.

Our district is growing as more families are finding value in the education the Olathe Public Schools provides. Our students are excelling and achieving great things. The district employs some of the most dedicated and effective teachers in the country. These factors, combined with the supportive community, lead to success for the students of this district.

We, as a Board of Education, are incredibly grateful to this community for its support of our schools, our students and our staff members. We are proud of the great things happening in the district and all that is to come in the future thanks to the support of the community.



2012-13 Board of Education: Rick Schier, Mike Poland, Harlan Parker, Amy Martin (President), LeEtta Felter, Debora Daniels (Vice President), Rita Ashley.

After many years of dedicated service, Rita Ashley retired from the board in June 2013. Brent McCune was elected to fill her position.

Outstanding Staff and Schools

- Jeremi Wonch, Indian Trail Middle School, is one of three state science finalists for the Presidential Awards for Excellence in Mathematics and Science Teaching. In mathematics, Patrick Flynn, Olathe East High School, is one of three math finalists for the Presidential Awards for Excellence in Mathematics and Science Teaching.

- Robyn Stuewe, manager of employee wellness; Tonya Pride, wellness specialist; and Cindy Galemore, director of health services have been published in a school nurse textbook, "School Nursing; a Comprehensive Text, 2nd Edition." The staff members authored a chapter on Employee Wellness: "Health Promotion and Disease Prevention for School Personnel."

- Erica Derrington, graphics manager, earned the Certified Graphics Communications Manager credential from the In-Plant Printing and Mailing Association, the highest honor of professional achievement available for in-house printing managers.
- Edward Hensley, automotive technology teacher at Millcreek Center, was named the National Institute for Automotive Excellence Instructor of the Year.



- Charles "Camden" Burton, Olathe Northwest High School biology teacher, was awarded the Armed Forces Communications and Electronics Association's Science, Technology, Engineering and Math Teaching Tools grant.



- Lane Green, director of athletics/activities and student transportation, was selected to be on the National Interscholastic Athletic Administrators Association Board of Directors. The NIAAA serves about 8,500 athletic administrators nationwide.

- Olathe Northwest High School Rave Choir Director Pam Williamson won a Grammy Award. Williamson is a featured soloist for the Kansas City Chorale. The Kansas City Chorale won a Grammy for its 2012 recording "Life & Breath — Choral Works by René Clausen."
- District Fine Arts Coordinator Martha Gabel was elected as president-elect for the Kansas Music Educators Association.

Caring, Quality

Educators

Olathe Public Schools takes pride in its caring, heartfelt community of teachers and support staff. Each staff member cares about the success of the students who make up the district. It shows in the awards they attain year after year.



- Jason Herman, assistant principal and athletic director at Olathe North High School, was named a Certified Athletic Administrator by the National Interscholastic Athletic Administrators Association.
- Olathe East High School soccer coach Terry Hair was named the National Soccer Coach of the Year by the National Federation of State High School Activities Associations. Hair's girls team finished the 2012 season nationally ranked and the Kansas Class 6A State Champions.
- Sunnyside Elementary School was recognized by the Kansas Department of Education in partnership with the Character Education Partnership with a Spotlight Award. The school's counseling program was recognized as one of only seven schools statewide to receive the Standard of Excellence Award from the Kansas State Department of Education.
- Westview Elementary School was awarded a Certificate of Merit as part of the 10th Annual Challenge Awards by the Confidence in Kansas Public Education Task Force.
- Indian Trail Middle School was recognized by the Kansas State Department of Education as a Title 1 Reward School. Reward schools are identified as the top 10 percent of Title 1 schools and are selected based upon high academic performance or progress.

Teaching Awards

Numerous teachers and administrators were awarded special honors during the school year. Here are a few of the best:

2013 Kansas Superintendent of the Year

Marlin Berry

Superintendent Dr. Marlin Berry was named by the Kansas School Superintendents' Association as the 2013 Kansas Superintendent of the Year.

Candidates for superintendent of the year are assessed according to their professionalism, communication, community involvement and leadership in meeting the needs of students.

"The recognition is purely a reflection of a very good school district with great teachers, administrators and support staff along with a very fine Board of Education. I'm humbled to be honored with a state full of very good superintendents who work each day to help educate the kids of Kansas," Berry said.

Berry has served the Olathe Public Schools since 2007; he first served as assistant superintendent and was then selected to serve as superintendent in 2010. Before coming to Olathe, Berry served as the superintendent in Smoky Valley Public Schools and Abilene Public Schools. Before being a district-level administrator, Berry was high school principal in both the Lindsborg and Gardner-Edgerton school districts.

Amy Martin, Olathe Board of Education president, was pleased to hear the news.

"We are absolutely thrilled that Dr. Berry has been recognized with this honor," she said. "He is an exceptional leader who truly puts the needs of students first. We as a board stand behind him and are happy to see him recognized for his dedication to the students and staff of the Olathe Public Schools."



Kansas Master Teacher

Julie Bliese

Julie Bliese, a first-grade teacher at Ravenwood Elementary School, was named a Kansas Master Teacher by Emporia State University. The award has been in existence since 1953 and fewer than 10 teachers are selected each year.

When she heard she received the award, Bliese said she was shocked.

"I was honored and humbled at the same time as there are so many amazing and dedicated teachers all around me," she said.

Her principal, Jim Brockway, says Bliese stands out in the crowd.

"Julie is the most distinguished educator I have ever worked with and she provides exceptional school service on a daily basis," Brockway wrote in his nomination letter for Bliese. "When I am in her classroom, I see kindness, patience, tolerance, and joy. Julie has confidence in her teaching abilities and is willing to give without the thought of gain."

To be eligible for nomination, each candidate must have served at least five years in schools in Kansas as a teacher or instructional leader, and have exemplified teaching or administrative effectiveness.



Milken National Educator

Michael Berndt

Prairie Center Elementary School third-grade teacher Michael Berndt was named a Milken National Educator in November 2012 by the Milken Family Foundation in a surprise ceremony at the school. As a Milken National Educator, Berndt received an unrestricted cash award of \$25,000.

Milken Family Foundation Board Member Tom Boysen was joined by Kansas Commissioner of Education Diane DeBacker, Deputy Commissioner Dale M. Dennis and Superintendent Dr. Marlin Berry to honor Berndt. Berndt was unaware he was being considered for the award until DeBacker revealed the name of the 2012 Milken National Educator to the applause and cheers of fellow teachers, administrators and students.

Debra Hannah, an instructional resource teacher for the Olathe School District, describes Berndt as “a rare gem of a teacher.”

“It was apparent from my first meeting with Mike that he was a rare and extremely gifted educator,” Hannah said. “His intellect and talents suit him perfectly in the classroom, allowing him to motivate students and make routine lessons come alive as he engages students in a relevant and rigorous format.”

Berndt was one of up to 40 educators around the country being recognized that year with the Milken National Educator distinction.



AWARD-WINNING STAFF MEMBERS

Kansas Cable Telecommunications

Horizon Award Kody Willnauer

Kody Willnauer, a music teacher at Regency Place Elementary was named a Kansas Telecommunications Horizon Award recipient in January 2013.

Willnauer, in his second year as an educator during the 2012-13 school year, said he was a bit overwhelmed, but excited, when he was told he received the award.

The Kansas Cable Telecommunications Horizon Awards are sponsored by the Kansas State Department of Education and the Kansas Cable Telecommunications Association. The program recognizes the exemplary work of teachers during their first year in the classroom. Willnauer was one of 32 teachers across the state honored with the award.

“Kody motivates learners with his enthusiasm, energy, and love of all things musical,” Principal Greg Oborny said. “Vocal technique, choreography, musicals with Broadway flair...he does it all! Incorporate learning technology and you’ve got a window into Kody’s classroom. Kids love learning and produce amazing music with his coaching and teaching.”



In the Spotlight

PERFECT ACT

Students in the district high schools this past year did something to make history: five students scored 36—an absolutely perfect score—on the ACT assessment.

Nationally, while the actual number of students earning a composite score of 36 varies from year to year, less than one-tenth of 1 percent of students taking the ACT earn a top score.

“We are so pleased with the accomplishments of these students,” Superintendent Dr. Marlin Berry said. “A wonderful combination of the hard work of the students, fine instructors and great parental support made this possible. We will be looking forward to seeing what these students achieve in the future.”

The students achieving perfect ACT scores this year are:



Erica Chang
Olathe East High School



Ryan Dahl
Olathe North High School



Evan Eschliman
Olathe South High School



Christoph Kinzel
Olathe North High School



Elizabeth Martin
Olathe East High School

Outstanding Students

- Cassie Wang, a senior at Olathe Northwest High School, was named one of America's top 10 youth volunteers of the year by the Prudential Spirit of Community Awards in Washington, D.C.
- Andrea Dahl, an eighth-grader at Pioneer Trail Middle School, was named a semifinalist in the 2012 Broadcom Masters, a national science, technology, engineering and math competition.
- Bethsy Montes, Olathe East High School, was named a semifinalist in the 2013 National Achievement Scholarship Program. The program recognizes academically promising African-American students throughout the nation.
- The Olathe Northwest High School Debate and Forensics Team was placed in the Societe' De 400. It puts the school in the top 0.5 percent of programs in the nation.
- Olathe North High School senior Spencer Buff was selected to be a member of the 2013 U.S. Army All-American Marching Band.
- Thespians from Olathe South High School took their performance of "13" in June to the International Thespian Festival in Lincoln, Neb.
- The National Council of Teachers of English honored students for their work on literary magazines. The Olathe North High School students are: Jaclyn Brewer, Hope Essex, Becca Renteria and Courtney Shields for their work on Mindburst.
- Presidential Scholar candidates are: Cassie Wang, Olathe Northwest High School; Kavya Shivashankar, Olathe North High School; Timothy Webber, Olathe North; and Zachary McKinzie, Olathe Northwest.

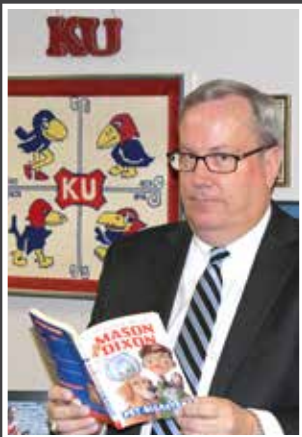


- The Olathe School District had 10 National Merit Finalists in 2013. They are: Olathe East High School: Ryan Schools, Jessica Hill; Olathe North High School: Andrew Johannesen, Sarah Kruger, Kavya Shivashankar, Timothy Webber; Olathe Northwest High School: Zachary McKinzie; Olathe South High School: Hannah Gabel, Vikram Lakhanpal, Samuel Rose
- Culinary Arts Program students won the ProStart Kansas Invitational. The students in the culinary and management teams and represented the district at the ProStart National Invitational in Baltimore.
- Olathe Northwest High School Ravonics Revolution Robotics team qualified to advance to the 2013 FIRST World Championship.
- Olathe North High School freshman Disha Dasgupta was a Grand Award winner in the Greater Kansas City Science and Engineering Fair.
- Olathe East High School students were honored for an application they developed called "ComOpp." The app was named Best in State in the Verizon App Challenge. The team members are Mark Masilionis, Bobbi Zang, Erin Spelger, Tyler Clark, Michael Johnson, Sean Branigan, Mackenzie Kruse, Mauricio Martinez and Kerry Hokanson.
- The Olathe North High School Science Olympiad team qualified to compete in the National Science Olympiad Tournament.
- Vanya Shivashankar, a sixth-grader at California Trail Middle School, tied for fifth place in the Scripps National Spelling Bee. This is the third time she has represented the district in the national bee.

F.R.E.D. Initiative



F.R.E.D. - Families Read Every Day



January 2013 was a celebration of readers in the Olathe Public Schools. For three weeks, every elementary school student read the same book. Students read in classrooms, families read together at home, and even the family pet dog was read to sometimes during the evening hours.

Funded through the Olathe Public Schools Foundation, Families Read Every Day – or F.R.E.D. – was an event that was deemed a raving success by all those involved. The program enabled every elementary student in the district to have a copy of the book “Mason Dixon: Pet Disasters” by Claudia Mills to take home and read with their family.

“I have never seen a program like this that puts a book in every child’s hands,” the author said during a visit to Meadow Lane Elementary School. “I’ve never seen a program that does this much to reach out to the community. It’s extraordinary and wonderful.”

The F.R.E.D. event included class discussions and daily instructional activities, as well as trivia questions posted on the foundation’s website.

“I knew this project would be good, but it turned out even better than I anticipated,” Library Media/Instructional Technology Coordinator Donna Roper said. “Having the author visit some of the schools enhanced the project. She was engaging and the students and staff enjoyed her presentations on writing. She brought the book alive for students.”



Author Claudia Mills poses with a student.



Rachel's Challenge



The Olathe School District and the Olathe Public Schools Foundation partnered to bring Rachel's Challenge to every middle and high school in the district, thanks to a generous grant from the foundation. The Rachel's Challenge program promotes kindness and compassion as a way of preventing bullying in schools. This program will serve as a complement to the Olathe Public Schools' ongoing, comprehensive efforts to prevent bullying in the district.

For two weeks in September 2012, there were schoolwide Rachel's Challenge assemblies and student leadership trainings reaching more than 14,000 students in grades 6-12. Rachel's Challenge efforts were offered throughout the school year, as a way of raising awareness about bullying and promoting kindness and compassion. Rachel's Challenge is another component the district will use to ignite and sustain a deliberate chain reaction of kindness.

"We are proud to work hand-in-hand with the district to bring Rachel's Challenge to middle and high school students," Executive Director of the Olathe Public Schools Foundation Cindy VonFeldt said. "We know that many students were touched by this program and we are happy to be able to provide a supplement to the district's comprehensive anti-bullying programs."



Outstanding Athletes ★★☆☆★★★

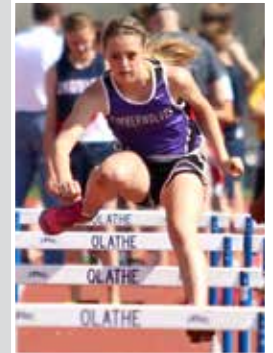
6A State Championship Teams

- Boys Bowling — Olathe North High School
- Girls Cross Country — Olathe East High School
- Softball — Olathe East High School
- Gymnastics — Olathe East High School



Individual 6A State Championships

- MacKenzie Saulnier, Olathe Northwest High School, Bowling
- Audrey Judd, Olathe Northwest High School, Golf
- Allison Meads, Olathe East High School, Gymnastics: All Around, Balance Beam, Floor Exercise and Vault
- Tanner Green, Olathe South High School, Track and Field: 200m
- Aaron Thacker, Dresden Wilbur, Tanner Green and Chris Coleman, Olathe South High School, Track and Field: 400m Relay
- Kyle Evans, Nick Hinrichs, Braxton Love, Parker Evans, Olathe East High School, Track and Field: 1600m Relay
- Kai Shean, Olathe North High School, Track and Field: High Jump
- Caelan Neal, Olathe East High School, Track and Field: Triple Jump
- Braden Smith, Olathe South High School, Track and Field: Shot Put and Discus
- Jasmine Thomas, Olathe East High School, Track and Field: 100m and 200m
- Kelsey Quiring, Olathe East High School, Track and Field: 800m
- Cameron Gueldner, Olathe Northwest High School, Track and Field: 3200m
- Blake Stovall, Olathe North High School, Wrestling, 126 lbs.



CHAMPIONS

2007 and 2008 Bond Updates ✓ Completed ● Remaining

Bond 2013 Passes

NEW SCHOOL CONSTRUCTION

- ✓ Forest View Elementary School
- ✓ Mission Trail Middle School
- ✓ Olathe Advanced Technical Center
- Elementary #35, opens fall 2014

SCHOOL ADDITIONS

- ✓ Countryside Elementary School
- ✓ Indian Creek Elementary School
- ✓ Manchester Park Elementary School
- ✓ Olathe East High School
- ✓ Olathe North High School
- ✓ Olathe Northwest High School
- ✓ Olathe South High School
- ✓ Havencroft Elementary School
- ✓ California Trail Middle School

SCHOOL RENOVATIONS

- ✓ Central Elementary School
- ✓ Ridgeview Elementary School
- ✓ Heartland Early Childhood Center
- ✓ Olathe North High School entry
- ✓ Washington Elementary School

AGING FACILITIES — IMPROVEMENT PROJECTS

- Windows, Heating/Air Conditioning, Roofing, Asphalt/Concrete, Flooring, Ceilings/Lighting
- ✓ 104 projects

SUPPORT FACILITIES

- Technology Support Building, opens spring 2014

SITE PURCHASES

- ✓ Elementary Site #1

DIGITAL CLASSROOMS

- ✓ All regular classrooms digital

INCREASED ACCESS TO TECHNOLOGY

- ✓ Foundation standards met at all schools, all levels

TECHNOLOGY FOR NEW SCHOOLS

- ✓ Forest View Elementary School
- ✓ Mission Trail Middle School

ADDITIONAL TECHNOLOGY PROJECTS

- ✓ Full wireless coverage (all schools and designated support buildings)
- ✓ Infrastructure enhancements, including network security
- ✓ Removal and reinstallation of technology for additions/remodels at Indian Creek, Countryside, Manchester Park, Ridgeview, and Central elementary schools
- ✓ Technology for four high school additions
- Technology for future new construction

District patrons approved a \$244.8 million mail-in bond election by 77 percent of the vote in June 2013.

The bond proposal will touch every school in the district. Major projects of this bond election include:

- The building of a fifth high school;
- The building of a 36th elementary;
- Various safety and security projects;
- Increased student access to technology; and
- Vital improvements to the district's facilities.

"We feel very fortunate to partner with a community that is so supportive of its schools and plays such a significant role in preparing students for their future," Olathe School Board President Amy Martin said.



Student Learning



Students in the Olathe Public Schools met the state's new accountability standards for math and reading assessments in 2012-13. The district made all four Annual Measureable Objectives by students meeting and exceeding the target scores on annual assessments.

93.7 percent
Proficient in Reading

91.4 percent
Proficient in Math

92.8 percent
Proficient in Science



STUDENT SUCCESS



Students Prepared for *Their* Future

Students Prepared for *Their* Future

Students Prepared for *Their* Future

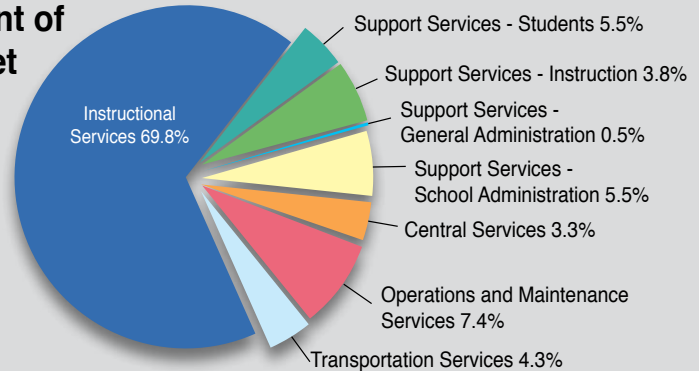
Students Prepared for *Their* Future



Financial Statement



Percent of Budget



Mill Levy

General Fund	20.000
Supplemental General	18.885
Capital Outlay	6.991
Special Liability	0.184
Extraordinary Growth	4.081
Cost of Living	3.543
Bond & Interest	15.250
Special Assessments	0.684
Total	69.618

Assessed Valuation

\$1,666,869,027

Expenditures

By Object Area

Salaries & Benefits	204,353,100
Professional & Technical Services	2,854,440
Transportation	9,903,278
Other Purchased Services	3,422,095
Supplies and Materials	6,890,506
Equipment	353,981
Utilities	6,182,245
Other	31,671
Total	\$233,991,316

Sources Of Revenue

Operating Funds

Local & County Taxes	74,624,994
State Funds	148,089,945
Federal	6,816,622
Total	\$229,531,561

Expenditures

By Function Area

Instructional Services	163,409,378
Support Services - Students	12,919,082
Support Services - Instruction	8,908,883
General Administration	1,159,153
School Administration	12,800,120
Central Services	7,630,532
Operations & Maintenance	17,199,686
Transportation Services	9,964,482
Total	\$233,991,316

STEWARDSHIP

A Message from the Superintendent



The production of this report shows that it was quite a year for the Olathe Public Schools. The 2012-13 school year was filled with local, state and national accolades for students and staff. What is most exciting is to see the breadth of student accomplishments. From academics to theater to athletics

to community service to music and much more, our students have accomplished great things.

This year we had five students who earned perfect scores on the ACT. It is a huge accomplishment for one student from a district to achieve such a feat, let alone for five students to do so. We also had a graduating senior, Cassie Wang from Olathe Northwest High School, earn the Prudential Spirit of the Community Award, a national honor that recognizes her for community service efforts. We had 10 National Merit Finalists and groups win state in a variety of activities and athletics.

Across the district, at every level, our students have put in hours

of effort in and out of the classroom to be their very best. We are very proud of all that they do on a daily basis and we are thankful for our dedicated staff.

And 2012-13 was also an incredible year for staff success. Prairie Center Elementary School Teacher Michael Berndt received the 2012 Milken National Educator Award. Julie Bliese, a teacher from Ravenwood Elementary School, received the 2013 Emporia State University Master Teacher honor and Kody Willnauer, a teacher at Regency Place Elementary School, received the Kansas Cable Telecommunications Horizon Award.

I don't like to compare one year to the next, but 2012-13 was a good one filled with student learning. Thanks to great teachers and staff, and the continued support of our community, our district is focused on continuing our success into the future.

Dr. Marlin Berry

A handwritten signature in black ink that reads "Marlin Berry". The signature is written in a cursive, flowing style.



Notification Statement of Non-discrimination:

The Olathe Public Schools prohibit discrimination on the basis of race, color, national origin, sex, age, religion or disability in its programs, activities or employment, and provides equal access to the Boy Scouts and other designated youth groups to its facilities as required by: Title IX of the Education Amendments of 1972, Title VI and Title VII of the Civil Rights Act of 1964, the Age Discrimination Act of 1975, the Americans with Disabilities Act (ADA), the Individuals with Disabilities Education Act, Section 504 of the Rehabilitation Act of 1973 and other relevant state and federal laws. Inquiries regarding compliance with applicable civil rights statutes related to ethnicity, gender, age discrimination or equal access may be directed to Staff Counsel, 14160 Black Bob Road, Olathe, KS 66063-2000, phone 913-780-7000. All inquiries regarding compliance with applicable statutes regarding Section 504 of the Rehabilitation Act and the Individuals with Disabilities Education Act and the Americans with Disabilities Act may be directed to the Assistant Superintendent General Administration, 14160 Black Bob Rd. Olathe, KS 66063-2000, phone (913) 780-7000. Interested persons including those with impaired vision or hearing, can also obtain information as to the existence and location of services, activities and facilities that are accessible to and usable by disabled persons by calling the Assistant Superintendent General Administration. (04/13)



14160 Black Bob Road • Olathe, Kansas • www.olatheschools.com • 913.780.7000